

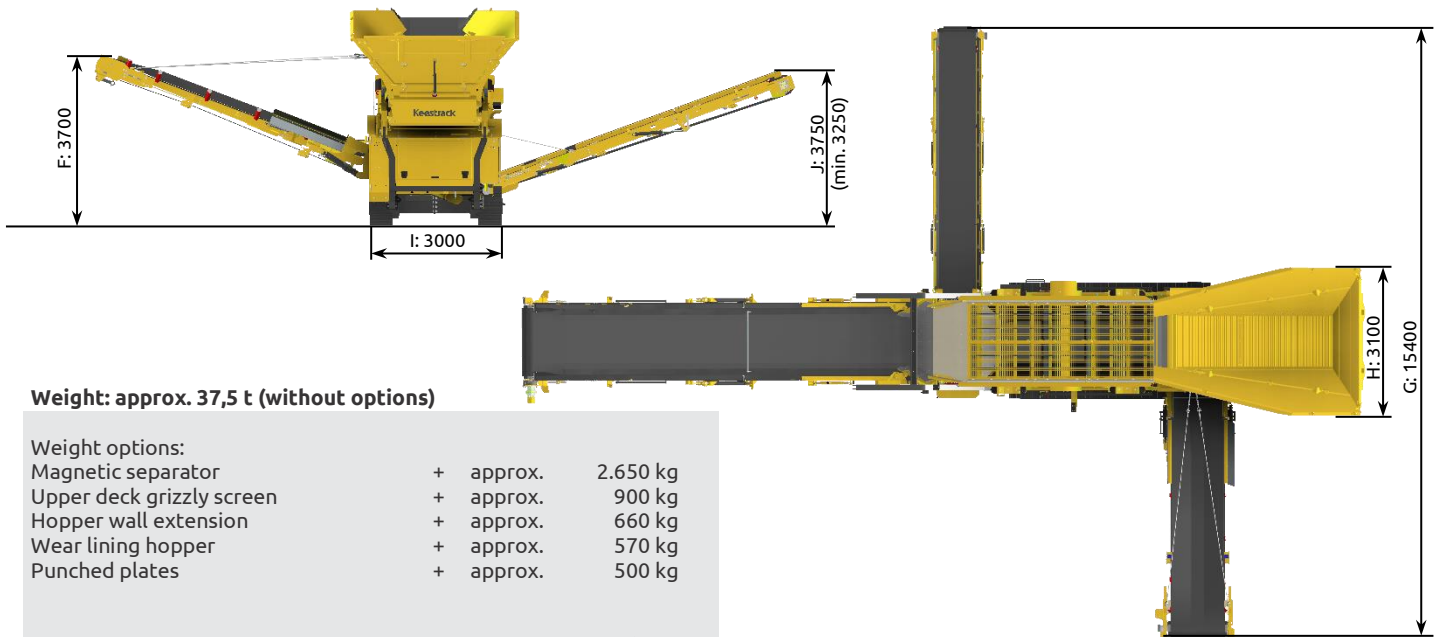
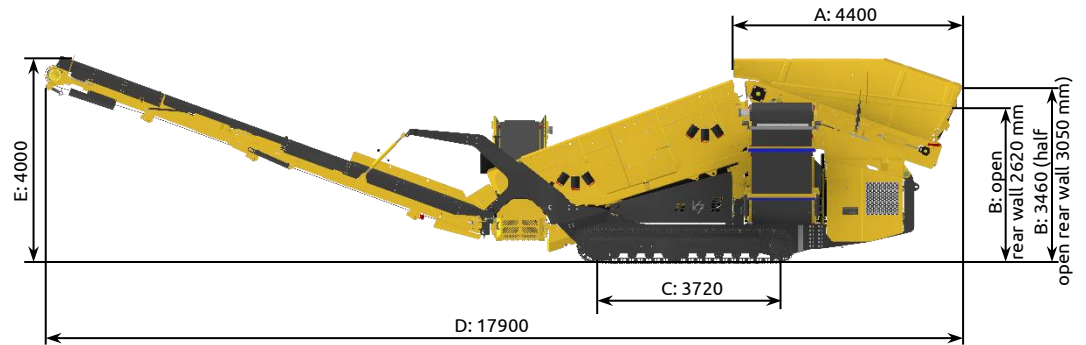
# SCALPER **k7e**

3-WAY-SPLIT



# DIMENSIONS

## OPERATION:



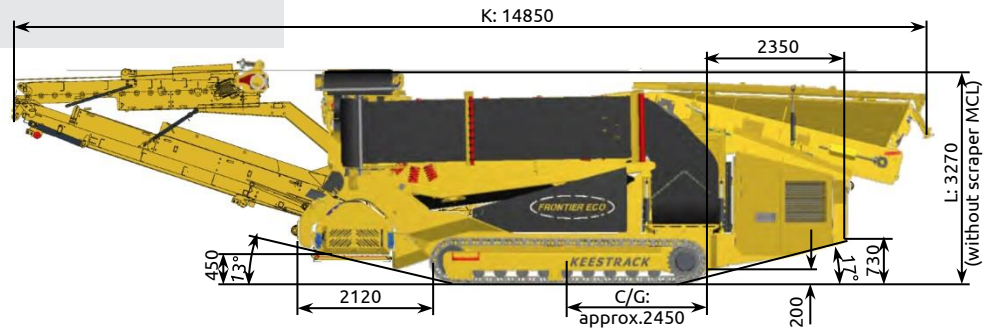
**Weight: approx. 37,5 t (without options)**

- Weight options:
- Magnetic separator + approx. 2.650 kg
- Upper deck grizzly screen + approx. 900 kg
- Hopper wall extension + approx. 660 kg
- Wear lining hopper + approx. 570 kg
- Punched plates + approx. 500 kg

**Transport width 3.000 mm (9'10")**

## TRANSPORT:

C/G = centre of gravity: Approx. 2450 mm acc. to options



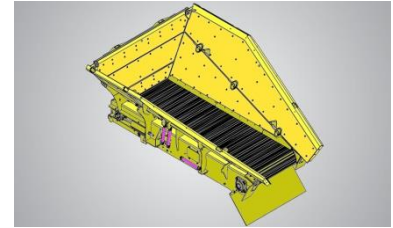
**REMARK:** All pictures might show options, not included in the scope of supply

A	B	C	D	E	F	G	H	I	J	K	L
4400	3460	3720	17900	4000	3700	15400	3100	3000	3750	14850	3270
14'5"	11'4"	12'2"	58'9"	13'1"	12'2"	50'6"	10'2"	9'10"	12'3"	48'7"	10'9"

## TECHNICAL SPECIFICATION

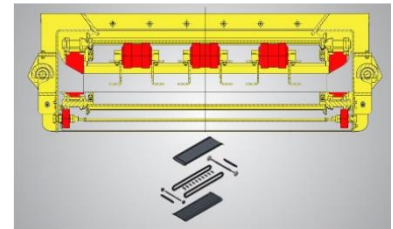
### 1) FEED HOPPER HEAVY DUTY

- Content	8 m <sup>3</sup> ; with hopper extension p/n 613060: 10 m <sup>3</sup>	(10 yard <sup>3</sup> )
- Design	Wear resistant steel HB 450 s = 15 mm to handle feed size up to 1.000 mm	
- Feeding height	min. 2.620 mm	(8'7")
- Feeding width	3.100 mm	(10'2")
- Feeding length lateral	4.400 mm	(14'5")
- Hopper walls	All three hopper walls are hydraulically fold-able	



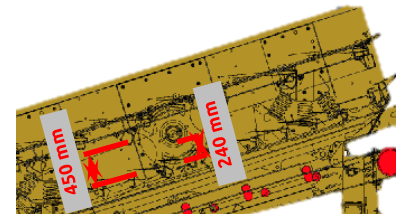
### 2) PLATE APRON FEEDER HEAVY DUTY

- Model	01 APR 300 K14; 6 support rails instead of 4	
- Full adjustable speed	0 - 8 m/min	(0 - 26 ft/min)
- Axle distance	3.560 mm	(11'8")
- Plate width	1.300 mm	(4'3")
- Drive	Hydraulic with gearbox 11 kW; i=38,7	(15 hp)
- Feed capacity	1.000 t/h	



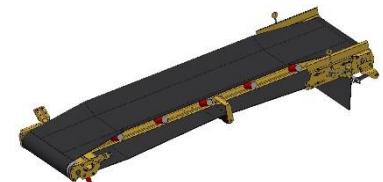
### 3) DOUBLE DECK SCREEN

- Model	11 SCR 100-00	
- Application	- For screening of fractions on the upper deck > 100 mm (max. 180 mm grizzly opening gives final product screening ca. 300 mm) - Increased space between the decks and middle fraction (450 instead of 390 mm) - Clearance below shaft: 240 mm (std. 180)	
	4.800 mm x 1.800 mm	(15'9" x 5'11")
- Length x width	Top deck 8,1 m <sup>2</sup>	
- Effective screen area	Bottom deck 8,1 m <sup>2</sup>	
- Top deck screens	3 pcs. side tensioned	
- Bottom deck screens	2 pcs. end tensioned	
- Drive	Hydraulic 22 kW	(30 hp)



### 4) UNDERSCREEN CONVEYOR

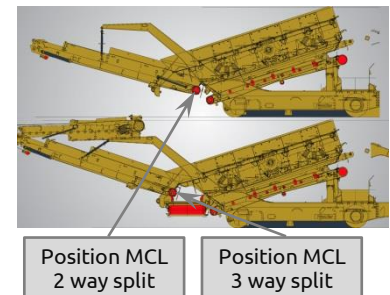
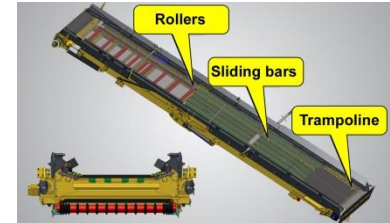
- Model	01 USC 400-00-H	
- Length	4.200 mm	(13'9")
- Width	1.200 mm	(3'11")
- Drive	5,5 kW E-drum motor	(7,5 hp)
- Rubber belt quality	EP 400/3 4+2 Grade N1	



## TECHNICAL SPECIFICATION

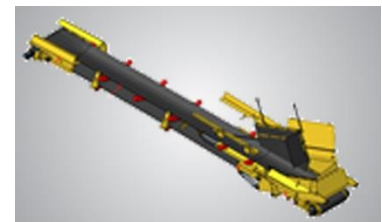
### 5) OVERSIZE BELT CONVEYOR

- Model	11 MCL-100-00-SXL-E	
- Length	9.063 mm	(29'9")
- Width	1.500 mm	(4'11")
- Drive	E-gear motor 7,5 kW at 50 Hz; 15 kW at 100 Hz	(11/20 hp)
- Belt speed	0,51 m/s at 50 Hz; 1,03 m/s at 100 Hz	
	(Standard: frequency inverter)	
- Drive and return drum	maintenance free; with bearings, arranged inside	
- Rubber belt quality	EP 800/5 8+2 Grade Y	
- Transport	Hydraulically fold-able	
- Stockpile volume	approx. 235 t ( $\gamma=1,7$ ; 37° angle of repose)	
- Operation without RSL	MCL can be slide hydraulically under the screen for stockpiling of middle and coarse fraction	
- Guiding chute	Automatically folding; no disassembly necessary for transport	
- Execution	Feeding zone with trampoline for damping of the falling material (extended lifetime of rubber belt); sliding bars; rollers	



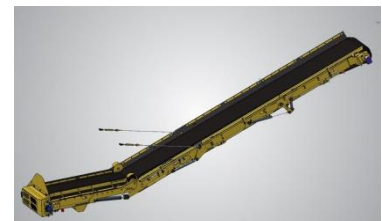
### 6) STOCKPILE BELT CONVEYOR LEFT (FINE FRACTION)

- Model	01 LSL 400-02-00-E	
- Length	8.650 mm	(28'4")
- Width	1.000 mm	(3'3")
- Drive	E-drum motor 11 kW; 1,7 m/s at 50 Hz; (Standard: frequency inverter, switchable from RSL to LSL; Option: separate inverter for RSL and LSL)	(15 hp)
- Rubber belt quality	EP 400/3 4+2 Grade Y	
- Transport	Hydraulically fold-able	
- Stockpile volume	Approx. 160 t; $\gamma=1,7$ ; 37° angle of repose	



### 7) STOCKPILE BELT CONVEYOR RIGHT (MIDDLE FRACTION)

- Model	11 RSL 400-00-E	
- Length	9.500 mm	(27'10")
- Width	1.000 mm	(3'3")
- Drive	15 kW E-drum motor (Standard: frequency inverter; switchable from RSL to LSL); 1,6 m/s	(20 hp)
- Rubber belt quality	XE 400/3 4+2 Chevron W = 750; H = 32 mm	
- Transport	Hydraulically fold-able	
- Stockpile volume	Approx. 170 t ( $\gamma=1,7$ ; 37° angle of repose)	



### 8) TRACK - UNIT

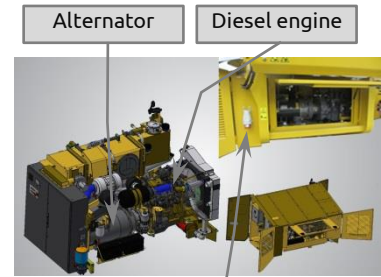
- Model	01 TRA-300-00	
- Length	3.720 mm	(12'2")
- Width track shoe	450 mm	(1'6")
- Total width	2.550 mm	(8'4")
- 2 speeds	1,1 km/h and 2 km/h	(0,7 / 1,2 mph)
- Drive	Hydraulic piston motor and planetary gears	



## TECHNICAL SPECIFICATION

### 9) ENGINE UNIT

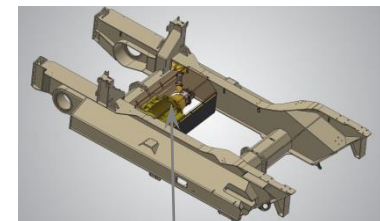
- Model	01 ENU 400-00 E	
- Diesel engine type	a) DEUTZ TCD 3.6; L4 b) CATERPILLAR C 4.4 TA; fixed speed c) CATERPILLAR C 4.4	<div style="border: 1px solid green; padding: 2px; display: inline-block;">Latest technology</div> p/n 101449 p/n 103534 p/n 103084
- Emission control	a) Tier 4f; EU STAGE IV; DOC; SCR b) Tier 3; EU STAGE IIIA c) Tier 3; EU STAGE IIIA	
- Power acc. to ISO 14396	a) 90 kW at 1.800 R.P.M. b) 85 kW at 1.500 R.P.M.; 98,1 kW at 1.800 R.P.M. c) 76 kW at 1.800 R.P.M.	(122 hp) (115/133 hp) (103 hp)
- Max. torque	a) 480 Nm / 1.600 R.P.M. b) 546 Nm / 1.500 R.P.M. c) 404 Nm / 1.800 R.P.M.	(354 lb ft) (402 lb ft) (298 lb ft)
- Engine speed	1.500 R.P.M. and 1.800 R.P.M. Low engine speed for low fuel consumption	
- Bore / Stroke	a) 98 / 120 mm; b + c) 105 / 127 mm	(4,0" x 4,7")
- Displacement	a) 3.600 cm <sup>3</sup> ; b + c) 4.400 cm <sup>3</sup>	(219 – 269 cuin)
- Voltage	24 Volt (for improved cold start properties)	
- Battery	64035, 140 Ah-460 A	
- Electrical starter	24 Volt, 3kW	
- Alternator for engine	28 Volt, 55 A	
- Engine Operation	4-stroke Diesel direct injection turbo-charged	
- Cooling	water-cooled	
- Pushing Fan	550 mm diameter	
- Air Cleaner	dry type air-cleaner with cyclone pre-cleaner primary and safety elements	
- Fuel tank	330 litres	(87 gal)
- Fuel pre-filter	with water separator	
- Fuel code	according to DIN 51601	
- Consumption	a-c): 220 g/kWh/1600 rpm (typical 9-11 l/h)	
- Alternator for operating electric components	ECP 34-2S/4; 105 kVA	
- Drive	a) Engine → Alternator for operating all electric components including: b) E-motor 45 kW for hydraulic pumps for APR, SCR, hydraulic cylinders and crawlers	
- Plug out	16A; 400 V, 50 Hz; 3 phases + 16A; 220 V; 50 Hz Optional other plug out connections are possible	



125 A; 400 V; 50 Hz; 3 phase  
Socket for external power supply



Air filter for alternator



E-motor with hydraulic pump

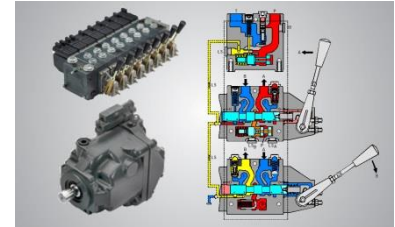
### ATTENTION

*Engine warranty expires in case non genuine  
Keestrack filters are used!*

## TECHNICAL SPECIFICATION

### 10) HYDRAULIC

- Hydraulic main pump	Variable flow, swash plate pump load sense open loop circuit 75 cc	
- Max. flow	112 L/min at 1500 R.P.M. or 137 L/min at 1.800 R.P.M.	(31/38 gpm)
- Max. pressure	265 bar	
- Pump regulation	servo hydraulic load sensing regulation, pressure compensation, flow compensation automatic flow optimizer	(98 gal)
- Hydraulic tank	370 l	(p/n 101187)
- Hydraulic oil filter	1 full flow filter in return line with integrated fine filter area (10 µm)	
- Hydraulic oil cooler	Integrated compact cooler, with water and air cooling package	
- Hydraulic valves	PVG 32 proportional 3 bank valve	



### 11) CONTROL

- Type	PLC – IP 67; dust and vibration proof	p/n 103485
- Display	LCD screen 4,3"	
- Operation	Control panel	
- Controller	Wired hand remote controller; or optional Radio remote controller (see option list)	
- Temperature control of hydraulic oil	> 83° C protection; first feeder stops, later engine stops	
- Diesel fuel tank level sensor	First low level warning, then feeder stops, then engine stops	
- Cold start protection	Below 0° C a warm-up is required	
- Speed sensor for screen box	Included	

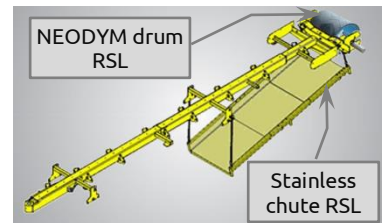


## TECHNICAL SPECIFICATION - OPTIONS

### 12) MAGNETIC SEPARATOR

- a) p/n X115485 - 10 KT-ND
- b) p/n X115493-12 KT-ND
- c) p/n X115500 14 KT-ND

- Type	a) 10 KT-ND; b) 12 KT-ND for LSL and RSL; c) 14 KT-ND for MCL	
- Length	a) 1.830 mm; b) 1.980 mm; c) 2.300 mm	(6'; 6'6"; 7'7")
- Width	a) 700 mm; b) 850 mm; c) 950 mm	(2'1"; 2'7"; 2'11")
- Magnetic power	400 GAUSS at: a) 280; b+c) 325 mm distance	
- Magnet dimensions	a) 1.070 x 600 b) 1.170 x 750 mm; c) 1.490 x 885 mm	(3'6" x 1'11") (3'10" x 2'5") (4'10" x 2'10")
- Speed	a) 2,0 m/s; b + c) 2,5 m/s	
- Drive	a) E-gear motor 4 kW; b + c) 5,5 kW	(5 hp / 7,5 hp)
- Weight	a) 760 b) 978 c) 1.213	(1.600 lb) (2.100 lb) (2.600 lb)
- Frame for Magnet MCL	p/n 606316; 660 kg	(1.400 lb)
- Frame for Magnet RSL	p/n 606388; 363 kg	(770 lb)
- Frame + Magnet LSL	p/n 604330 (10 KT ND); 760 +133 kg	(1.900 lb)
- Discharge chute MCL	p/n 606405	
- Magnet drum RSL	p/n 102853; Neodym; 540 GAUSS / 40 mm (with E-gear motor drive)	
- Discharge chute for magnetic drum RSL	p/n 661692; stainless steel; 112 kg; 3 m; 1000 mm; for transport disassembled	(247 lb)



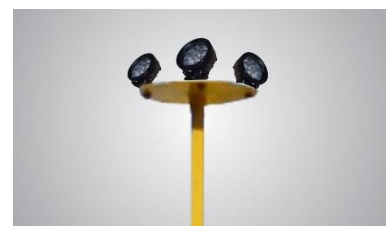
### 13) RADIO REMOTE CONTROL – Level 2

- Order no.	Remote 103162 Sticker 101464
- Functions	- Tracks forwards / backwards with automatic speed control - Main belt conveyor start / stop and +/- - Side conveyor MCL start / stop and +/- - Apron feeder start / stop and +/- - Automatic start / stop - Machine stop button (blue) - Display



### 14) WORKING LIGHTS

- Tower with 4 lamps	p/n 701006 LED lights 12/24 V; 45 W each lamp: 9 pcs. LED's (p/n 205147) 4500 Lumen	
- protection degree	IP69K	
- Weight	9 kg	(20 lb)



## TECHNICAL SPECIFICATION - OPTIONS

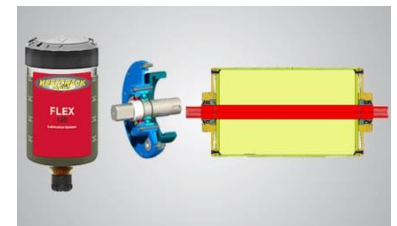
### 15) FUEL FILLING PUMP p/n 701030

- with automatic stop p/n 701030
- Weight 10 kg (22 lb)
- Model F 80-24-1"
- Capacity 80 l/min
- Filter 3 micron with water absorbent media
- Suction hose ¾" 1,5 m long
- Drive On board-electric 24 V DC



### 16) RETURN DRUMS BEARINGS LIFE TIME LUBRICATED p/n 101556

- On conveyors MCL, LSL, RSL; USC
- Description - Bearings maintenance free for the total life time  
- Screen bearings lubricated with lubrication cartridge (Change interval with engine oil)



### 17) CENTRAL GREASING SYSTEM p/n 609687

- Cycle time Adjustable
- Drive On board electric, 24 V DC
- Weight 6 kg (13 lb)



### 18) ANTI CLOGGING SYSTEM p/n 102499

- Application To be used for bottom deck if the feed material is sticky and the deck is clogging
- Weight 30 kg (65 lb)



### 19) SCREEN FLOW BRAKE p/n 611930

- Application To increase the screening efficiency when screening round shaped material, which has bigger size than 200 mm and is transferred to fast above the screen.
- Weight 136 kg (290 lb)



### 20) FAST TENSIONING SYSTEM FOR SCREENS p/n 701025

- Application For Upper deck
- Function No bolts have to be opened; only wedges are used for screen tensioning
- Weight 14 kg (30 lb)





## TECHNICAL SPECIFICATION - OPTIONS

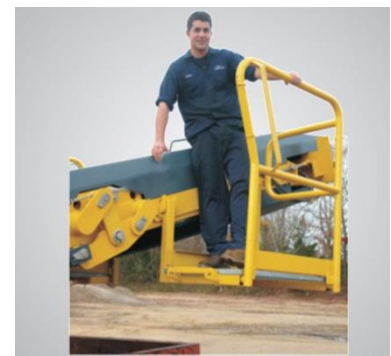
### 21) WALKWAY ALONG THE SCREEN p/n 603860 and 610426

- p/n 603860                      On the right side; hydraulically fold-able
- p/n 610426                      On the right side; hydraulically fold-able and on the left side fix
- Weight                              p/n 603860: 200 kg                              (420 lb)
- p/n 610426: 323 kg                              (680 lb)



### 22) PICKING STATION and CHEVRON BELT ON MCL

- Picking station application      To take out pieces of wood and plastic from the demolition material
- Available parts                      p/n 610429: left and right side; 260 kg                              (570 lb)
- p/n 610427: right side; 130 kg                              (285 lb)
- p/n 610428: left side; 130 kg                              (285 lb)
- p/n 615671: preparation for picking station
- Adjustment speed MCL              Either on RELYTEC panel or optional radio remote control
- Weight                              43 kg
- Chevron belt                          On XXA MCL: p/n 201549
- Knocking roll                          For Chevron belt MCL; p/n 693756; 17 kg                              (35 lb)



## TECHNICAL SPECIFICATION - OPTIONS

### 23) Options LSA, RSL and USC

#### TUNGSTEN SCRAPERS

- Application For wet and sticky material
- Available parts
  - p/n 102280: Tungsten scraper LSA + USC
  - p/n 101807: Tungsten scraper LSA
  - p/n 101561: Tungsten scraper USC

#### CHEVRON BELT

p/n 200807: CHEVRON belt LSA (left side conveyor)

#### HEAVY DUTY FEED ZONE

p/n 701002: material on RSL up to 200 mm

#### ARCTIC RUBBER BELTS

Interchange ability to the standard conveyor.  
up to -30° C

p/n 701023 for LSA, USC, MCL standard  
p/n 701023 for LSA, USC, MCL XXA

#### EXECUTION WITHOUT RSL

p/n 701027  
Weight: - 3.565 kg

(- 7.800 lb)

### 24) Options to STANDARD HOPPER

#### HOPPER EXTENSIONS

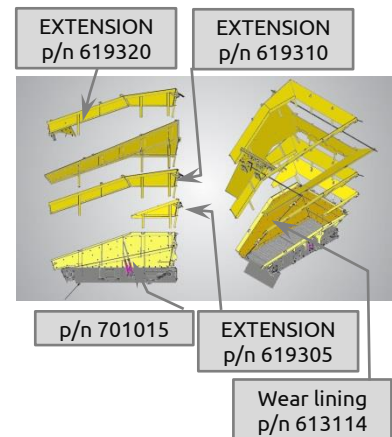
- Left + right + rear side Both sides H=450 mm + rear H=600 mm; p/n 619310; Approx. + 1.080 kg (+ 2.270 lb)
- With Front flap p/n 619320; Approx. + 1.440 kg (+ 3.000 lb)
- Hopper volume 10 m<sup>3</sup>

#### CORNER EXTENSIONS

- Hopper volume On the right side, left side and rear wall p/n 619305; + 592 kg (+ 1.200 lb)

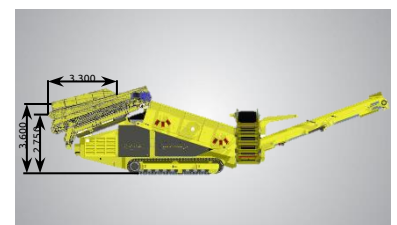
#### WEAR LINING HOPPER

Wear lining HB 450; s=8 mm at the top and bottom  
p/n 613114; + 641 kg (+ 1.350 lb)



### 25) BELT FEEDER – for feed size up to 400 mm

- Belt width BW 1.500 mm
- Axle distance AD 4.460 mm
- Feeding width 2.830 mm
- Feeding length 3.300 mm
- Feeding height Hydraulically adaptable 2.750 mm – 3.600 mm
- Belt KT Flex 630/1 6+3
- Hopper walls mechanically foldable
- Drive E-Gear motor 7,5 kW; 0,51 m/s @ 50 Hz



### 26) LIFTING EYES

- For lifting the machine for transport reasons p/n 601618

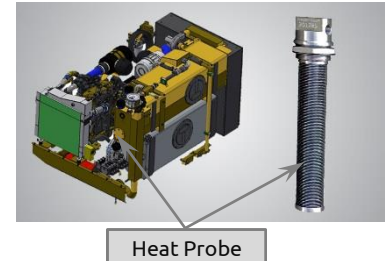


## TECHNICAL SPECIFICATION - OPTIONS

### 27) HEAT PROBE FOR HYDRAULIC OIL p/n 103614

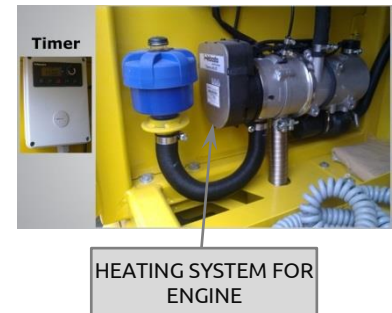
(this option is only available together with the heating system p/n 203460)

- Type	HP 2024-ORB;	
- Description	Turbulated Immersion Heat Exchanger Multiple immersion tank heaters utilize hot coolant to keep bulk fluids warm	
- Order information	This heating system is available for the dieseltank and the hydraulic oil tank (order each extra!)	
- Insert length	610 mm	(24")
- Output at -30° C	3 kW	(4 hp)



### 28) Option for ENGINE UNIT p/n 203460

<b>HEATING SYSTEM FOR ENGINE</b>	p/n 203460	
- Heating power	up to 9,1 kW;	(12 hp)
- Fuel consumption	0,19 - 1,1 l/h	
- Voltage / Watt	24V; 37-90 W	
- Operating temperature	-40°C - + 80°C	
- Weight	4,8 kg	(11 lb)
- Additional	Incl. timer for 3 starting times and temperature pre-selection	



### 29) UMTS MODEM WITH GPS TRACKING SYSTEM "KEESTRACKER"

(without SIM card) p/n 102971

- Functions	- WEB portal: position of the machine can be displayed on Google Maps; a geo-fence can be generated.
	<u>FOR DEALER ONLY:</u>
	- Real time access to Diesel engine, parameters of components and alarms.



### TRANSFER MACHINE DATA THROUGH KEESTRACKER

The Buyer will not transfer personal data to KEESTRACK. As part of the service, KEESTRACK will receive the following data regarding the machine through "Keestracker", the tracking and controlling system of the machine in question:

- Location data of the machine
- Machine usage data (such as: performance of the engine and other functions)

The Buyer acknowledges that this information does not constitute confidential business information of the Buyer. The Buyer provides its explicit consent for this data collection and takes appropriate technical and organizational measures to ensure that natural persons cannot be identified by these mechanical data.

The Buyer explicitly acknowledges that this information is provided free of charge to KEESTRACK for the delivery of services offered by KEESTRACK and to adapt or improve its services and/or products.

## TECHNICAL SPECIFICATION – SCREEN CHOICE

### 01) TOP DECK

#### PUNCHED PLATES

(feed size up to 600 mm)

**Keestrack punched plates are highly abrasion resistant**

p/n	mm	Plate s=10 mm
202453	30	TD HB 450
202455	35	TD HB 450
202346	40	TD HB 450
202347	45	TD HB 450
202348	50	TD HB 450
202349	55	TD HB 450
202350	60	TD HB 450
202351	65	TD HB 450
202352	70	TD HB 450
202353	75	TD HB 450
202354	80	TD HB 450
202268	100	TD HB 450
202337	110	TD HB 450
202339	125	TD HB 450
605553	140	TD HB 450
202342	150	TD HB 450
202343	180	TD HB 450
202344	200	TD HB 450

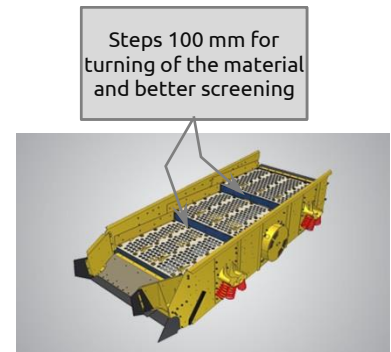


#### PUNCHED PLATES

##### STEPDECK

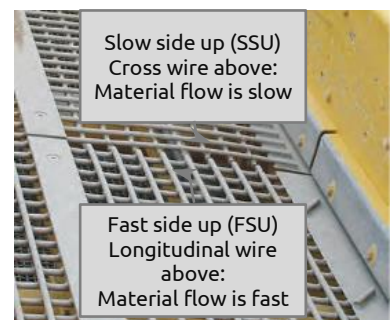
(feed size up to 600 mm)

p/n	mm	Plate s=10 (15) mm
619701P	60-15	TD HB 450
619631P	60-10	TD HB 450
620650P	70	TD HB 450
619702P	80	TD HB 450
619703P	100	TD HB 450
620306P	125	TD HB 450
620940P	150	TD HB 450



#### WELDED WIRE MESH

p/n	Description	Remark
202284	40 x 40 x 10 mm	
605076	45 x 45 x 12 mm	
202282	55 x 55 x 12 mm	Fast side up
202087	60 x 60 x 12 mm	



#### WOVEN WIRE MESH

##### TOPDECK

p/n	Description
202189	10 x 10 x 2,8 mm
202183	18 x 18 x 4 mm
202200	20 x 20 x 4 mm
202199	25 x 25 x 5 mm
202610	30 x 30 x 6 mm
202217	35 x 35 x 7 mm
202184	40 x 40 x 8mm
202236	45 x 45 x 8 mm
202237	50 x 50 x 8 mm
202239	55 x 55 x 9 mm
202197	60 x 60 x 10 mm
202240	65 x 65 x 10 mm
202238	70 x 70 x 10 mm
202241	75 x 75 x 12,5 mm
202198	80 x 80 x 12,5 mm



## TECHNICAL SPECIFICATION – SCREEN CHOICE

### 01) TOP DECK

#### FINGER SCREENS

Finger dimensions  $\varnothing 36 / \varnothing 17 \text{ mm} - 800 \text{ mm}$  (p/n 101106)

#### REMARK:

Finger openings average [mm]; forged fingers; deviations are possible; measuring of opening is in the beginning of the second third of the length of the finger.

p/n	mm	Inch
601806	45	1 3/4"
601809	52	2"
601821	75	3"

#### GRIZZLY STEP DECK

To be used for feed size bigger than 400 mm and < 1000 mm.

#### APPLICATIONS:

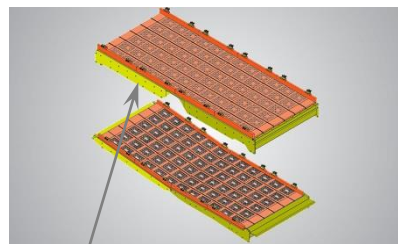
- Scalping of overburden in saleable sizes;
- Rip Rap Rock (armour shorelines)

p/n	mm	Inch	Weight [kg]
601884	55	2"	1953
601885	75	3"	1751
601886	100	4"	1655
601887	125	5 3/8"	1566
617490	180	7"	1800

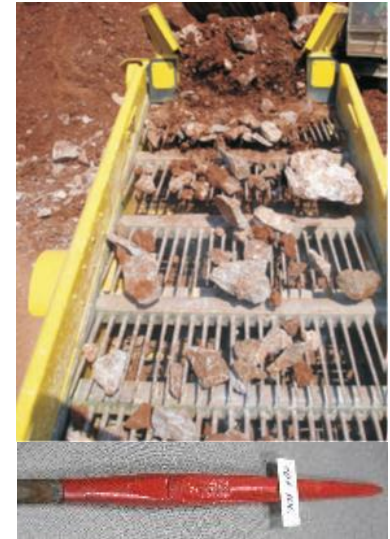
#### PU - Deck

p/n: .....

Available meshes have to be confirmed by KT case by case

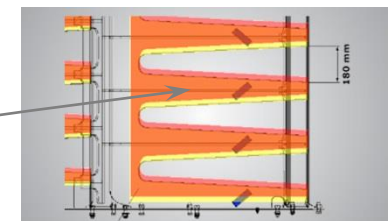


PU Top Deck



Rip Rap rock

Second Grizzly top plate  
For adjusting openings; to be welded to grizzly base plate

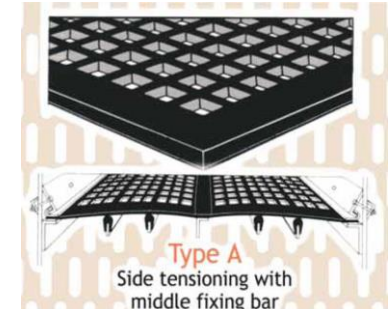


#### RUBBER DECK

Advantages:

- Long lifetime
- Low noise
- Self-cleaning

p/n	mm	Thickness
105098	55	35
105064	60	35
105548	65	35
105065	80	35
105550	120	35



Type A  
Side tensioning with middle fixing bar

# TECHNICAL SPECIFICATION – SCREEN CHOICE

## 02) BOTTOM DECK

### FINGER SCREENS

Finger dimensions  $\varnothing 20 / \varnothing 9 \text{ mm} - 570 \text{ mm}; M 16 (p/n 600053)$

#### REMARK:

Finger openings average [mm]; forged fingers; deviations are possible; measuring of opening is in the beginning of the second third of the length.

### WOVEN WIRE MESH

### BOTTOM DECK

**Polyurethane deck (PU) banana shaped for higher throughput**  
p/n: 617880

Available meshes have to be confirmed by KT case by case

### ELONGATED HARP SCREEN

Advantages:

- high percentage of open screening area
- less danger of clogging

### SERPA DIAMOND

### S-WAVE WIRE SCREEN MESH

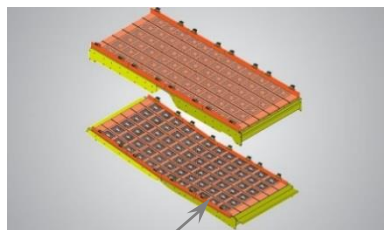
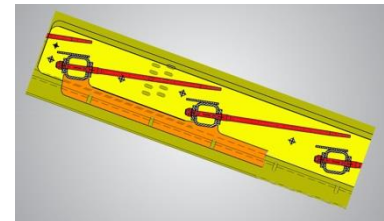
p/n	mm	Inch
601844	25	1"
601841	30	1 1/4"
601835	40	1 1/2"
601855	50	2"

p/n	Description
202401	BD MESH 4 x 4 x 1,5 mm
202334	BD MESH 5 x 5 x 2 mm
202226	BD MESH 6 x 6 x 2 mm
202591	BD MESH 7 x 7 x 2 mm
202044	BD MESH 8 x 8 x 2,5 mm (stainless 202607)
202045	BD MESH 10 x 10 x 2,5 mm
202046	BD MESH 12 x 12 x 3 mm
202648	BD MESH 14 x 14 x 2,5 mm
202047	BD MESH 15 x 15 x 3 mm
202085	BD MESH 16 x 16 x 3 mm
202581	BD MESH 17 x 17 x 3 mm
202205	BD MESH 18 x 18 x 4 mm
202048	BD MESH 20 x 20 x 4 mm
202551	BD MESH 20 x 20 x 5 mm
202220	BD MESH 22 x 22 x 4 mm
202060	BD MESH 24 x 24 x 5 mm
202049	BD MESH 25 x 25 x 5 mm
202203	BD MESH 28 x 28 x 5 mm
202050	BD MESH 30 x 30 x 5 mm
202469	BD MESH 32 x 32 x 6 mm
202204	BD MESH 35 x 35 x 7 mm
202051	BD MESH 40 x 40 x 8 mm
202104	BD MESH 45 x 45 x 8 mm
202052	BD MESH 50 x 50 x 8 mm
202257	BD MESH 55 x 55 x 10 mm
202176	BD MESH 60 x 60 x 10 mm
202394	BD MESH 70 x 70 x 10 mm
202395	BD MESH 75 x 75 x 12,5 mm
202053	BD MESH 80 x 80 x 12,5 mm

p/n	Description
202208	BD HARP 3 x 200 x 1,2 mm
202672	BD HARP 4 x 100 x 2 mm
202031	BD HARP 4 x 200 x 2 mm
202181	BD HARP 5 x 100 x 1,6 mm
202032	BD HARP 5 x 200 x 2 mm
202391	BD HARP 6 x 40 x 2 mm
202426	BD HARP 6 x 150 x 3 mm
202033	BD HARP 6 x 200 x 2 mm
202537	BD HARP 8 x 50 x 2,5 mm
202034	BD HARP 8 x 200 x 2 mm
202416	BD HARP 10 x 50 x 2 mm
202035	BD HARP 10 x 200 x 2,8 mm
202036	BD HARP 12 x 200 x 3 mm
202219	BD HARP 15 x 40 x 2 mm
202613	BD HARP 15 x 150 x 4 mm
202037	BD HARP 15 x 200 x 3 mm
202427	BD HARP 16 x 50 x 3 mm
202099	BD HARP 20 x 200 x 4 mm
202039	BD HARP 25 x 200 x 4 mm
202040	BD HARP 30 x 200 x 5 mm
202041	BD HARP 40 x 200 x 5 mm
202698	BD HARP-SERPA 6x200x2,5 mm
202259	BD HARP-SERPA 12x200x3 mm
202136	BD HARP-SERPA 15x200x3 mm
202834	BD HARP-SERPA 25x200x3 mm
202258	BD S-WAVE 10x200x2,5 mm



PU Bottom Deck – banana shaped



SERPA = DIAMOND



S-WAVE

