

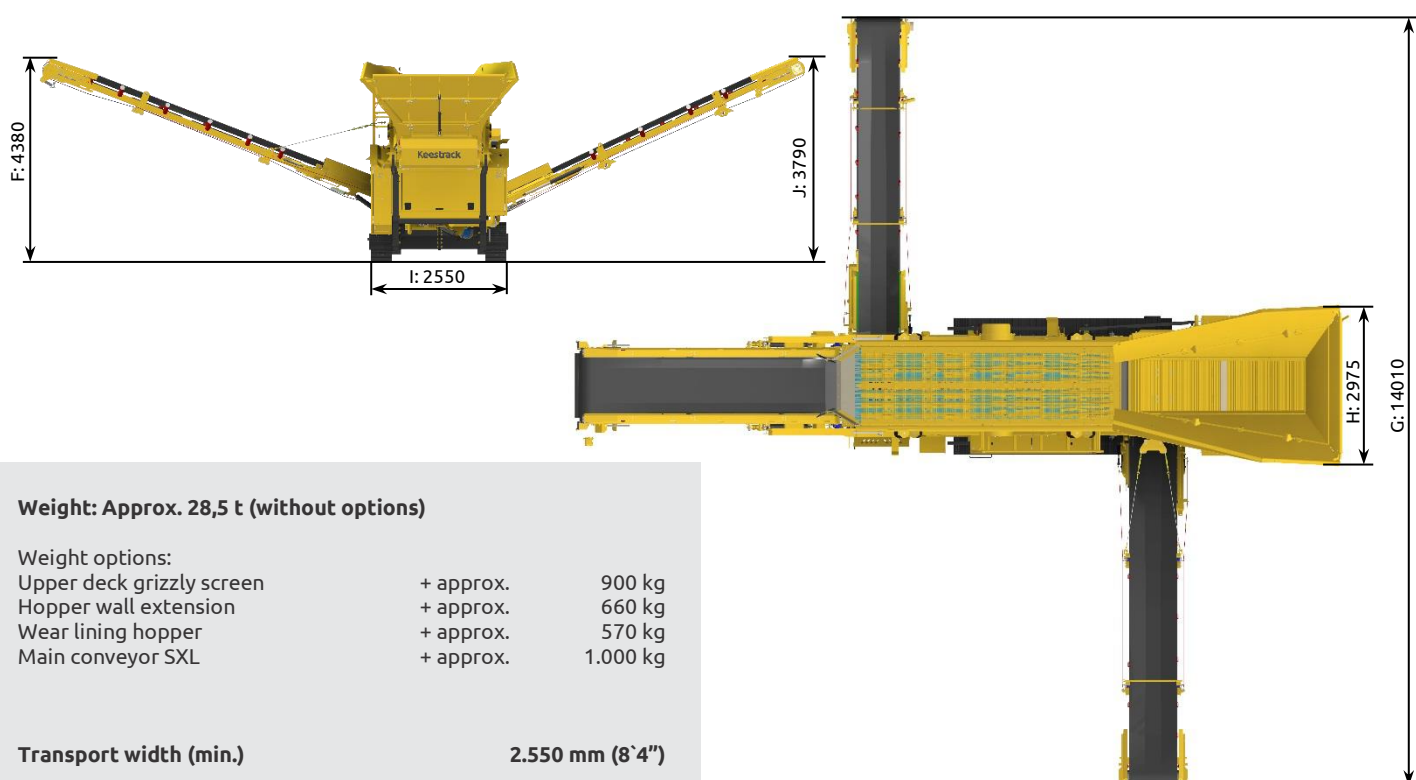
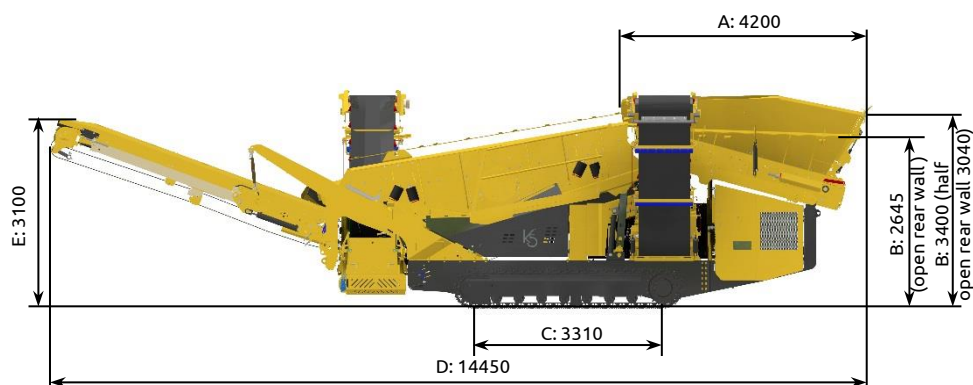
# SCALPER K5 FLIP FLOW

## 3-WAY-SPLIT



## DIMENSIONS

### OPERATION:



#### Weight: Approx. 28,5 t (without options)

##### Weight options:

Upper deck grizzly screen

+ approx. 900 kg

Hopper wall extension

+ approx. 660 kg

Wear lining hopper

+ approx. 570 kg

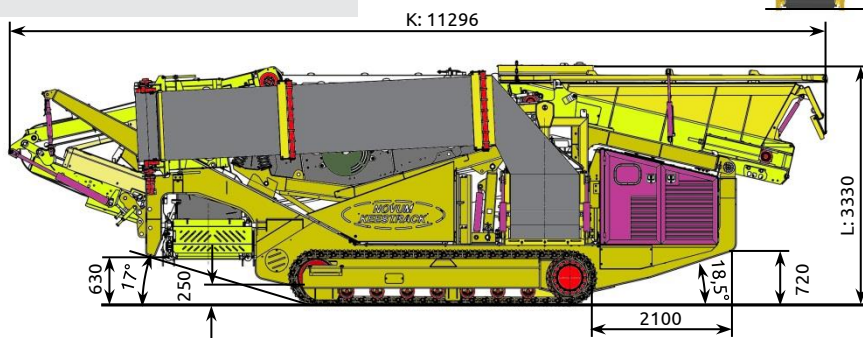
Main conveyor SXL

+ approx. 1.000 kg

#### Transport width (min.)

2.550 mm (8'4")

### TRANSPORT:



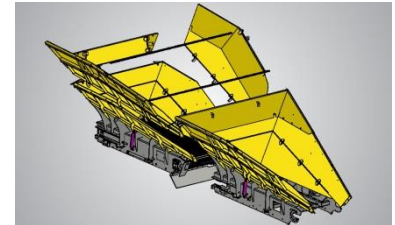
**REMARK:** All pictures might show options, not included in the scope of supply

A	B	C	D	E	F	G	H	I	J	K	L
4200	3400	3310	14450	3100	4380	14010	2975	2550	3790	11296	3330
13'9"	11'2"	10'10"	47'5"	10'2"	14'4"	46'0"	9'9"	8'4"	12'5"	37'1"	10'11"

## TECHNICAL SPECIFICATION

### 1) FEED HOPPER

- Content	7 m <sup>3</sup> with hopper extension p/n 606342: 9,5 m <sup>3</sup>	(9,1 yard <sup>3</sup> )
- Design	Wear resistant steel HB 450	
- Feeding height	Min. 2.645 mm	(8'8")
- Feeding width	2.975 mm	(9'9")
- Feeding length lateral	4.200 mm	(13'9")
- Hopper walls	All three hopper walls are folding hydraulic	



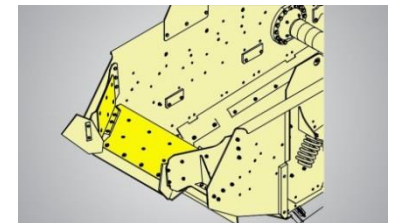
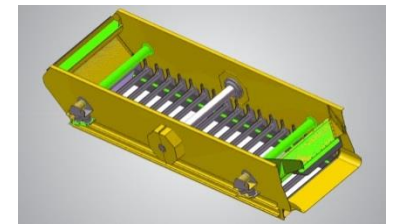
### 2) PLATE APRON FEEDER

- Model	22 APR 100-00	
- Full adjustable speed	0 - 7,8 m/min	(0 - 20 ft/min)
- Axle distance	3.150 mm	(10'4")
- Plate width	1.120 mm	(3'8")
- Drive	Hydraulic with gearbox 7,5 kW	(10 hp)
- Feed capacity	450 t/h	



### 3) DOUBLE DECK SCREEN FLIP FLOW

- Model	TD Circular stroke, BD Flip flow	
- Length x width	5.000 mm x 1.350 mm	(17'x4'5")
- Effective screen area	Top deck 6,75 m <sup>2</sup> (L=5 m circular stroke) Bottom deck 5,4 m <sup>2</sup> (L=4 m Flip Flow)	
- Top deck screens	4 pcs. side tensioned (no cassettes)	
- Bottom deck screens	PU elements without Oxhorn	
- Drive	Hydraulic 15 kW	(20 hp)
- Inclinations	The screenbox can be set hydraulically to 3 inclinations (12,1°; 14° and 15,5°)	
- Wear plates	On screen oversize discharge chute	



### 4) UNDERSCREEN CONVEYOR

- Model	22 USC 100-00-H	
- Length	4.200 mm	(13'9")
- Width	1.200 mm	(3'11")
- Drive	7,5 kW hydraulic motor	(11 hp)
- Rubber belt quality	EP 400/3 4+2 Grade N1	



### 5) OVERSIZE BELT CONVEYOR

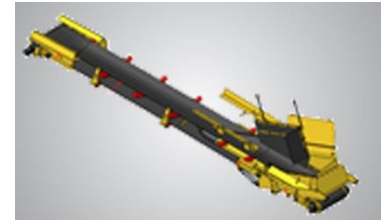
- Model	21 MCL 300-00-H	
- Length	5.000 mm	(16'5")
- Width	1.200 mm	(3'11")
- Drive	Hydraulic 8,3 kW	(11 hp)
- Rubber belt quality	EP 630/4 6+2 Option: p/n 200367 (EP 400/3 4+2 CHEVRON W=740 H=15 mm)	
- Transport	Hydraulically fold-able	
- Stockpile volume	Approx. 90 t (γ=1,7; 37° angle of repose)	



## TECHNICAL SPECIFICATION

### 6) STOCKPILE BELT CONVEYOR LEFT (FINE FRACTION)

- Model	22 LSL 100-00-H	
- Length	8.350 mm	(27'5")
- Width	900 mm	(2'11")
- Drive	Hydraulic 11 kW	(15 hp)
- Rubber belt quality	EP 400/3 4+2 Grade Y	
- Transport	Hydraulically fold-able	
- Stockpile volume	Approx. 260 t	
(γ=1,7; 37° angle of repose)		



### 7) STOCKPILE BELT CONVEYOR RIGHT (MIDDLE FRACTION)

- Model	22 RSL 100-00-H	
- Length	8.280 mm	(27'2")
- Width	800 mm	(2'8")
- Drive	Hydraulic 7,5 kW, speed adjustable	(10 hp)
- Rubber belt quality	EP 400/3 3+1,5 Chevron W=500 H=16 mm	
- Transport	Hydraulically fold-able	
- Stockpile volume	Approx. 170 t	
(γ=1,7; 37° angle of repose)		



### 8) TRACK - UNIT

- Model	21 TRA-400-00	
- Length	3.310 mm	(11'10")
- Width track shoe	400 mm	(1'4")
- Total width	2.500 mm	(8'2")
- 2 speeds	1,3 km/h and 2,2 km/h	(0,8/1,4 mph)
- Drive	Hydraulic piston motor and planetary gears	

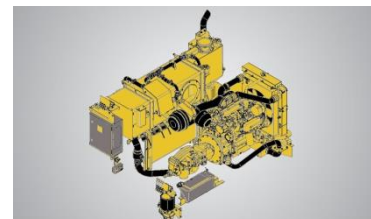




## TECHNICAL SPECIFICATION

### 9) ENGINE UNIT

- Model	22 ENU 100-00	
- Diesel engine type	a) DEUTZ TCD 3.6; L4 b) CATERPILLAR C 4.4 TA; fixed speed c) CATERPILLAR C 4.4	p/n 100834 p/n 103534 p/n 103084
- Emission control	a) Tier 4f; EU STAGE IV; DOC; SCR b) Tier 3; EU STAGE IIIA c) Tier 3; EU STAGE IIIA	Latest technology
- Power acc. to ISO 14396	a) 74,4 kW at 1.900 R.P.M. b) 85 kW at 1.500 R.P.M.; 98,1 kW at 1.800 R.P.M. c) 76 kW at 1.800 R.P.M.	(101 hp) (115/133 hp) (103 hp)
- Max. torque	a) 410 Nm / 1.600 R.P.M.; b) 546 Nm / 1.500 R.P.M. c) 404 Nm / 1.800 R.P.M.	(302 lb ft) (402 lb ft) (298 lb ft)
- Engine speed	1.800 R.P.M. Low engine speed for low fuel consumption	
- Bore/ Stroke	a) 98 / 120 mm; b + c) 105 / 127 mm	(4,0" x 4,7")
- Displacement	a) 3.600 cm <sup>3</sup> ; b + c) 4.400 cm <sup>3</sup>	(219 – 269 cuin)
- Voltage	24 Volt (for improved cold start properties)	
- Battery	64035, 140 Ah-460 A	
- Electrical starter	24 Volt, 3 kW	
- Alternator	28 Volt, 55 A	
- Engine Operation	4-stroke Diesel direct injection turbo-charged	
- Cooling	water-cooled	
- Pushing Fan	550 diameter	
- Air Cleaner	dry type air-cleaner with syclone pre- cleaner primary and safety elements	
- Fuel tank	330 litres	(87 gal)
- Fuel pre-filter	with water separator	
- Fuel code	according to EN 590	
- Consumption	a) 215 g/kWh/1600 rpm (typical 9-11 l/h)	



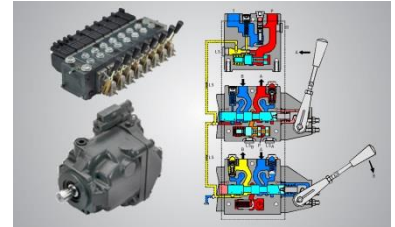
### ATTENTION

*Engine warranty expires in case non genuine Keestrack filters are used!*

## TECHNICAL SPECIFICATION

### 10) HYDRAULIC

- Hydraulic main pump	Variable flow, swash plate pump load sense open loop circuit 100 ccm	
- Max. flow	$180 + 60 + 40 = 280$ l/min	(54 gpm)
- Max. pressure	$265 + 200 + 180$ bar	
- Pump regulation	servo hydraulic load sensing regulation, pressure compensation, flow compensation automatic flow optimizer	
- Hydraulic pump II	Fixed flow 33 ccm gear pump (for LSC)	
- Hydraulic pump III	Fixed flow 22 ccm gear pump (for USC)	
- Hydraulic tank	370 l	(98 gal)
- Hydraulic oil filter	1 full flow filter in return line with integrated fine filter area (10 $\mu$ m)	
- Hydraulic oil cooler	Integrated compact cooler, with water and air cooling package	
- Hydraulic valves	PVG 32 proportional 6 bank valve	
<b>With high efficient „Load sensing” hydraulic pumps, the fuel consumption is reduced by approx. 20-25%, compared to standard gear pump and flow divider hydraulic systems.</b>		



### 11) CONTROL

- Type	PLC – IP 67; dust and vibration proof
- Display	LCD screen 4,3"
- Operation	Control panel
- Controller	Wired hand remote controller; or optional Radio remote controller (see option list)
- Temperature control of hydraulic oil	> 83° C protection; first feeder stops, later engine stops
- Diesel fuel tank level sensor	First low level warning, then feeder stops, then engine stops
- Cold start protection	Below 0° C a warm-up is required
- Speed sensor for screen box	Included



## TECHNICAL SPECIFICATION - OPTIONS

### 12) RADIO REMOTE CONTROL – Level 2

- Order no. Remote 103162  
Sticker 101464
- Functions
  - Tracks forwards / backwards with automatic speed control
  - Main belt conveyor start / stop and + / -
  - Side conveyor MCL start / stop and + / -
  - Apron feeder start / stop and + / -
  - Automatic start / stop
  - Machine stop button (blue)
  - Display



### 13) WORKING LIGHTS

- Tower with 4 lamps p/n 701006  
LED lights 12/24 V; 45 W  
each lamp: 9 pcs. LED's (p/n 205147)  
4500 Lumen
- protection degree IP69K
- Weight 9 kg (20 lb)



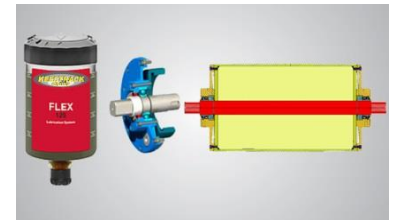
### 14) FUEL FILLING PUMP p/n 701030

- with automatic stop p/n 701030
- Weight 10 kg (22 lb)
- Model F 80-24-1"
- Capacity 80 l/min
- Filter 3 micron with water absorbent media
- Suction hose 3/4" 1,5 m long
- Drive on board-electric 24 V DC



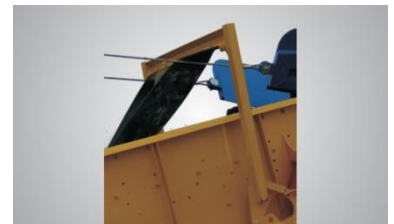
### 15) RETURN DRUMS BEARINGS LIFE TIME LUBRICATED p/n 101556

- On conveyors MCL, LSL, RSL; USC
- Description
  - Bearings maintenance free for the total life time
  - Screen bearings lubricated with lubrication cartridge (Change interval with engine oil)



### 16) SCREEN FLOW BRAKE p/n 607476

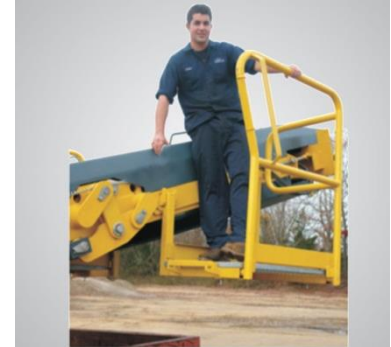
- Application To increase the screening efficiency when screening round shape material, which has bigger size than 200 mm and transferred to fast above the screen.
- Weight 136 kg (290 lb)



## TECHNICAL SPECIFICATION - OPTIONS

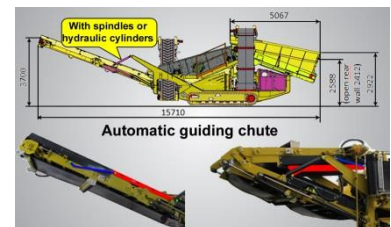
### 17) PICKING STATION and CHEVRON BELT ON MCL

- Picking station application      To take out pieces of wood and plastic from the demolition material
- Available parts                      p/n 610429: left and right side; 260 kg                      (570 lb)  
p/n 610427: right side; 130 kg                      (285 lb)  
p/n 610428: left side; 130 kg                      (285 lb)  
p/n 615671: preparation for picking station
- Adjustment speed MCL            Either on RELYTEC panel or optional radio remote control
- Chevron belt                          On standard MCL: p/n 602570  
On SXL MCL: p/n 201632



### 18) MAIN CONVEYOR 21 MCL SXL-H p/n 693810

- Length                                  6.800 mm ( + 1.800 mm)
- MCL angle setting                      With spindles: p/n 693810;                      ( + 2.100 lb)  
With hydraulic cylinder: p/n 693810+693803
- Operation without RSC              MCL can be slide hydraulically under the screen for stockpiling of middle and coarse fraction
- Guiding chute                          Automatically folding; no disassembly necessary for transport
- Execution                                Feeding zone with trampoline for damping of the falling material (extended lifetime of rubber belt); sliding bars
- Transport                                Length: + 1.785 mm                      (L: +5'9")  
Height 3.470 mm                      (H: 11'5")
- Weight                                    + 1.000 kg                      ( + 2.200 lb)



### 19) Options LSL and USC

#### TUNGSTEN SCRAPERS

- Application                              For wet and sticky material
- Available parts                          p/n 102288: Tungsten scraper LSL + USC  
p/n 101560: Tungsten scraper LSL  
p/n 101808: Tungsten scraper USC  
p/n 200360: CHEVRON belt LSL

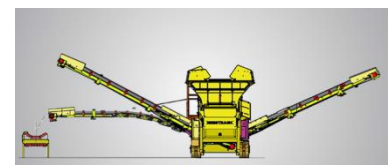


#### CHEVRON BELT

### 20) Options to STANDARD HOPPER

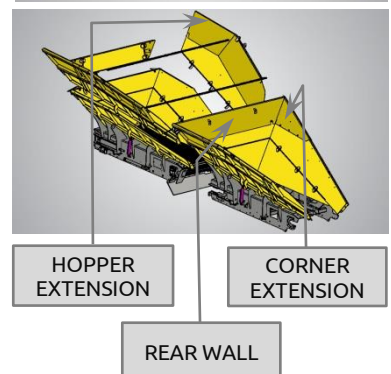
#### HOPPER EXTENSIONS

- On two sides: H=600 mm; with 2 chains
- Left side                                  p/n: 615925; approx. + 313 kg                      ( + 690 lb)
- Right side                                p/n: 615930; approx. + 313 kg                      ( + 690 lb)



#### CORNER EXTENSIONS

- On the right side: p/n 615955; + 95 kg                      ( + 200 lb)
- Remark: with corner                      On the left side: p/n 694255; + 95 kg                      ( + 200 lb)
- extensions and rear wall,                      Rear wall: p/n 615950; + 240 kg                      ( + 500 lb)
- hopper volume is increased to  
8 m<sup>3</sup>



#### WEAR LINING HOPPER

- Wear lining HB 450; s=8 mm at the bottom                      p/n 603990; + 280 kg                      ( + 600 lb)
- Wear lining HB 450; s=8 mm at the top and bottom; p/n 616650; + 600 kg                      ( + 1.320 lb)

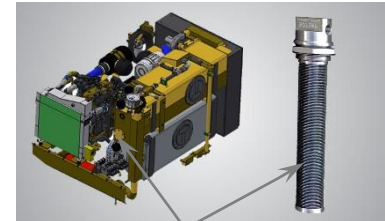


## TECHNICAL SPECIFICATION - OPTIONS

### 21) HEAT PROBE FOR HYDRAULIC OIL p/n 103614

(this option is only available together with the heating system p/n 203460)

- Type	HP 2024-ORB; Turbulated Immersion Heat Exchanger	
- Description	Multiple immersion tank heaters utilize hot coolant to keep bulk fluids warm	
- Order information	This heating system is available for the dieseltank and the hydraulic oil tank (order each extra!)	
- Insert length	610 mm	(24")
- Output at -30° C	3 kW	(4 hp)



Heat Probe

### 22) Option for ENGINE UNIT p/n 203460

<b>HEATING SYSTEM FOR ENGINE</b>	p/n 203460	
- Heating power	up to 9,1 kW;	(12 hp)
- Fuel consumption	0,19 - 1,1 l/h	
- Voltage / Watt	24V; 37-90 W	
- Operating temperature	-40°C - + 80°C	
- Weight	4,8 kg	(11 lb)
- Additional	Incl. timer for 3 starting times and temperature pre-selection	



HEATING SYSTEM FOR ENGINE

### 23) CENTRAL GREASING SYSTEM p/n 609687

- Cycle time	Adjustable	
- Drive	On board electric, 24 V DC	
- Weight	6 kg	(13 lb)



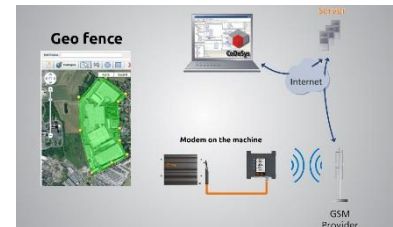
## TECHNICAL SPECIFICATION - OPTIONS

### 24) UMTS MODEM WITH GPS TRACKING SYSTEM "KEESTRACKER" (without SIM card) p/n 102971

- Functions
  - WEB portal: position of the machine can be displayed on Google Maps; a geo-fence can be generated.

#### FOR DEALER ONLY:

- Real time access to Diesel engine, parameters of components and alarms.



### TRANSFER MACHINE DATA THROUGH KEESTRACKER

The Buyer will not transfer personal data to KEESTRACK. As part of the service, KEESTRACK will receive the following data regarding the machine through "Keestracker", the tracking and controlling system of the machine in question:

- Location data of the machine
- Machine usage data (such as: performance of the engine and other functions)

The Buyer acknowledges that this information does not constitute confidential business information of the Buyer. The Buyer provides its explicit consent for this data collection and takes appropriate technical and organizational measures to ensure that natural persons cannot be identified by these mechanical data.

The Buyer explicitly acknowledges that this information is provided free of charge to KEESTRACK for the delivery of services offered by KEESTRACK and to adapt or improve its services and/or products.