

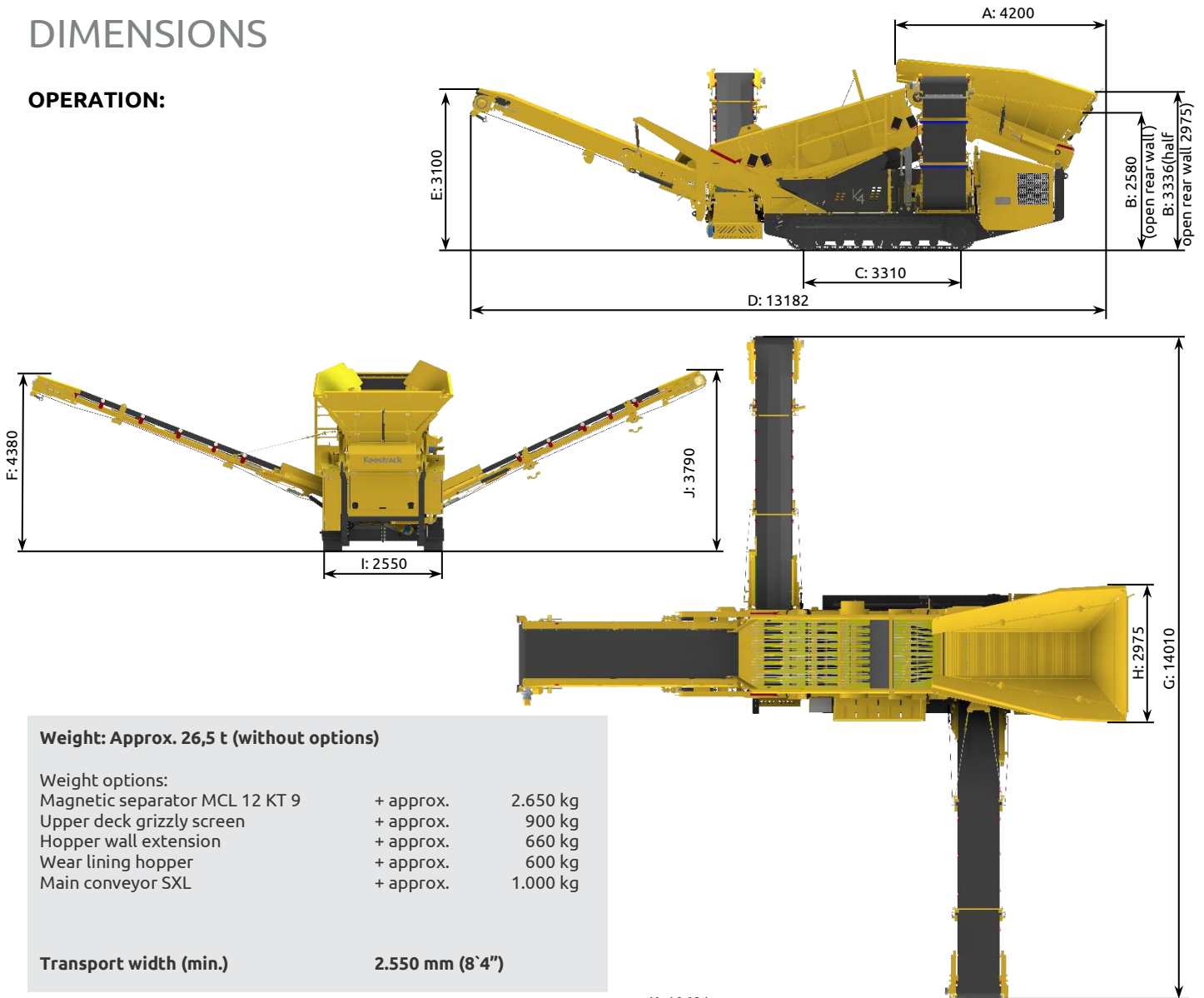
# SCALPER K4

3-WAY-SPLIT



## DIMENSIONS

### OPERATION:

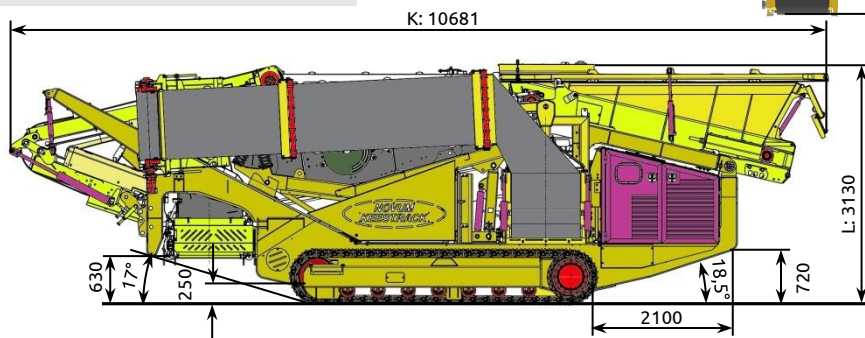


#### Weight: Approx. 26,5 t (without options)

Weight options:		
Magnetic separator MCL 12 KT 9	+ approx.	2.650 kg
Upper deck grizzly screen	+ approx.	900 kg
Hopper wall extension	+ approx.	660 kg
Wear lining hopper	+ approx.	600 kg
Main conveyor SXL	+ approx.	1.000 kg

Transport width (min.)                      2.550 mm (8'4")

### TRANSPORT:



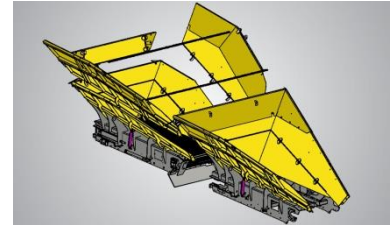
**REMARK:** All pictures might show options, not included in the scope of supply

A	B	C	D	E	F	G	H	I	J	K	L
4200	3336	3310	13182	3100	4380	14010	2975	2550	3790	10681	3130
13'9"	10'11"	10'10"	43'3"	10'2"	14'4"	46'0"	9'9"	8'4"	12'5"	35'0"	10'3"

## TECHNICAL SPECIFICATION

### 1) FEED HOPPER

- Content	7 m <sup>3</sup> with hopper extension p/n 606342: 9,5 m <sup>3</sup>	(9,1 yard <sup>3</sup> )
- Design	Wear resistant steel HB 450	
- Feeding height	Min. 2.580 mm	(8'6")
- Feeding width	2.975 mm	(9'9")
- Feeding length lateral	4.200 mm	(13'9")
- Hopper walls	All three hopper walls are hydraulically fold-able	



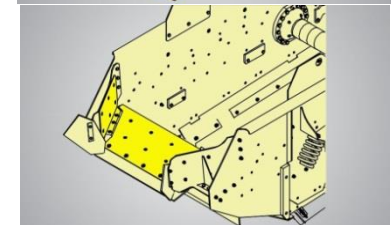
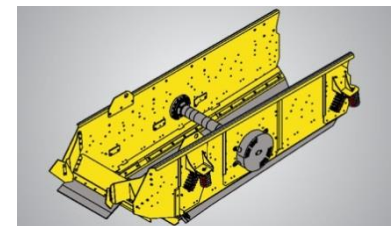
### 2) PLATE APRON FEEDER

- Model	21 APR 350-00	
- Full adjustable speed	0 - 7,8 m/min	(0 - 20 ft/min)
- Axle distance	3.150 mm	(10'4")
- Plate width	1.120 mm	(3'8")
- Drive	Hydraulic with gearbox 7,5 kW	(10 hp)
- Feed capacity	350 t/h	



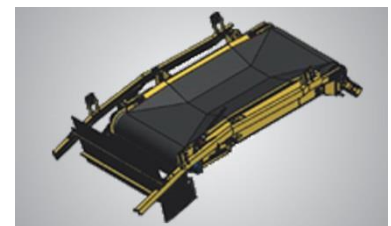
### 3) DOUBLE DECK SCREEN

- Model	21 SCR 100	
- Length x width	4.200 mm x 1.500 mm	(13'9"x4'11")
- Effective screen area	Top deck 6,3 m <sup>2</sup> (L=4,2 m) Bottom deck 5,4 m <sup>2</sup> (L=3,6 m)	
- Top deck screens	3 pcs. side tensioned	
- Bottom deck screens	2 pcs. end tensioned	
- Drive	Hydraulic 15 kW	(20 hp)
- Inclinations	The screenbox can be set hydraulically to 3 inclinations (12,1°; 14° and 15,5°)	
- Wear plates	On screen oversize discharge chute	



### 4) UNDERSCREEN CONVEYOR

- Model	21 USC 300-00-H	
- Length	3.340 mm	(11'0")
- Width	1.200 mm	(3'11")
- Drive	7,5 kW hydraulic motor	(11 hp)
- Rubber belt quality	EP 400/3 4+2 Grade N1	



### 5) OVERSIZE BELT CONVEYOR

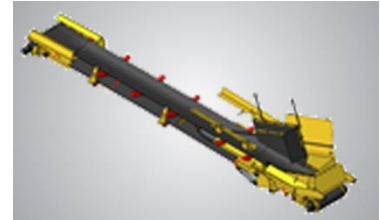
- Model	21 MCL 300-00-H	
- Length	5.000 mm	(16'5")
- Width	1.200 mm	(3'11")
- Drive	Hydraulic 8,3 kW	(11 hp)
- Rubber belt quality	EP 630/4 6+2 Option: p/n 200367 (EP 400/3 4+2 CHEVRON W=740 H=15 mm)	
- Transport	Hydraulically fold-able	
- Stockpile volume	Approx. 90 t	
( $\gamma=1,7$ ; 37° angle of repose)		



## TECHNICAL SPECIFICATION

### 6) STOCKPILE BELT CONVEYOR LEFT (FINE FRACTION)

- Model	21 LSL 300-00-H	
- Length	8.350 mm	(27'5")
- Width	900 mm	(2'11")
- Drive	Hydraulic 11 kW	(15 hp)
- Rubber belt quality	EP 400/3 4+2 Grade Y	
- Transport	Hydraulically fold-able	
- Stockpile volume	Approx. 260 t	
(γ=1,7; 37° angle of repose)		



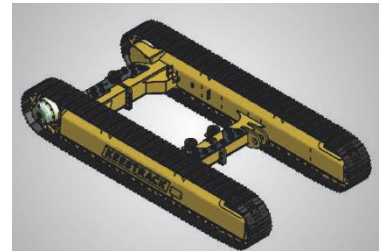
### 7) STOCKPILE BELT CONVEYOR RIGHT (MIDDLE FRACTION)

- Model	21 RSL 300-00-H	
- Length	8.280 mm	(27'2")
- Width	800 mm	(2'8")
- Drive	Hydraulic 7,5 kW, speed adjustable	(10 hp)
- Rubber belt quality	EP 400/3 3+1,5 Chevron W=500 H=16 mm	
- Transport	Hydraulically fold-able	
- Stockpile volume	Approx. 170 t; γ=1,7; 37° angle of repose	



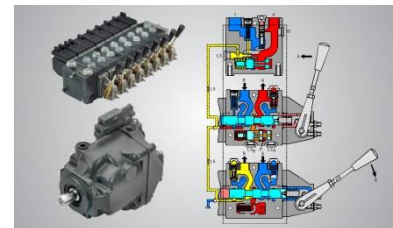
### 8) TRACK - UNIT

- Model	21 TRA-400-00	
- Length	3.310 mm	(11'10")
- Width track shoe	400 mm	(1'4")
- Total width	2.500 mm	(8'2")
- 2 speeds	1,3 km/h and 2,2 km/h	(0,8/1,4 mph)
- Drive	Hydraulic piston motor and planetary gears	



### 9) HYDRAULIC

- Hydraulic main pump	Variable flow, swash plate pump load sense open loop circuit 100 ccm	
- Max. flow	180 + 60 + 40 = 280 l/min	(54 gpm)
- Max. pressure	265 + 200 + 180 bar	
- Pump regulation	servo hydraulic load sensing regulation, pressure compensation, flow compensation automatic flow optimizer	
- Hydraulic pump II	Fixed flow 33 ccm gear pump (for LSC)	
- Hydraulic pump III	Fixed flow 22 ccm gear pump (for USC)	
- Hydraulic tank	370 l	(98 gal)
- Hydraulic oil filter	1 full flow filter in return line with integrated fine filter area (10 μm)	(p/n 101187)
- Hydraulic oil cooler	Integrated compact cooler, with water and air cooling package	
- Hydraulic valves	PVG 32 proportional 6 bank valve	
	<b>With high efficient „Load sensing” hydraulic pumps, the fuel consumption is reduced by approx. 20-25%, compared to standard gear pump and flow divider hydraulic systems.</b>	

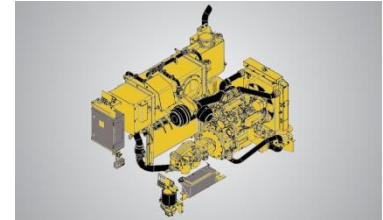




## TECHNICAL SPECIFICATION

### 10) ENGINE UNIT

- Model	21 ENU 400-00	
- Diesel engine type	a) DEUTZ TCD 3.6; L4 b) CATERPILLAR C 4.4 TA; fixed speed c) CATERPILLAR C 4.4	p/n 100834 p/n 103534 p/n 103084
- Emission control	a) Tier 4f; EU STAGE IV; DOC; SCR b) Tier 3; EU STAGE IIIA c) Tier 3; EU STAGE IIIA	<b>Latest technology</b>
- Power acc. to ISO 14396	a) 74,4 kW at 1.900 R.P.M. b) 85 kW at 1.500 R.P.M.; 98,1 kW at 1.800 R.P.M. c) 76 kW at 1.800 R.P.M.	(101 hp) (115/133 hp) (103 hp)
- Max. torque	a) 410 Nm / 1.600 R.P.M.; b) 546 Nm / 1.500 R.P.M. c) 404 Nm / 1.800 R.P.M.	(302 lb ft) (402 lb ft) (298 lb ft)
- Engine speed	1.800 R.P.M. Low engine speed for low fuel consumption	
- Bore/ Stroke	a) 98 / 120 mm; b + c) 105 / 127 mm	(4,0" x 4,7")
- Displacement	a) 3.600 cm <sup>3</sup> ; b + c) 4.400 cm <sup>3</sup>	(219 – 269 cuin)
- Voltage	24 Volt (for improved cold start properties)	
- Battery	64035, 140 Ah-460 A	
- Electrical starter	24 Volt, 3 kW	
- Alternator	28 Volt, 55 A	
- Engine Operation	4-stroke Diesel direct injection turbo-charged	
- Cooling	water-cooled	
- Pushing Fan	550 diameter	
- Air Cleaner	dry type air-cleaner with cyclone pre- cleaner primary and safety elements	
- Fuel tank	330 litres	(87 gal)
- Fuel pre-filter	with water separator	
- Fuel code	according to EN 590	
- Consumption	a) 215 g/kWh/1600 rpm (typical 9-11 l/h)	



### ATTENTION

*Engine warranty expires in case non genuine Keestrack filters are used!*

### 11) CONTROL

- Type	PLC – IP 67; dust and vibration proof	p/n 103485
- Display	LCD screen 4,3"	
- Operation	Control panel	
- Controller	Wired hand remote controller; or optional Radio remote controller (see option list)	
- Temperature control of hydraulic oil	> 83° C protection; first feeder stops, later engine stops	
- Diesel fuel tank level sensor	First low level warning, then feeder stops, then engine stops	
- Cold start protection	Below 0° C a warm-up is required	
- Speed sensor for screen box	Included	



# TECHNICAL SPECIFICATION - OPTIONS

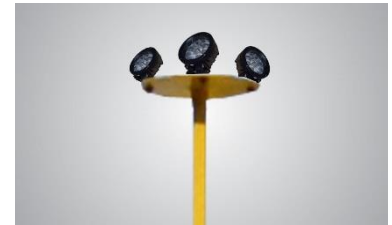
## 12) RADIO REMOTE CONTROL – Level 2

- Order no.                              Remote 103162  
  Sticker 101464
  
- Functions                                - Tracks forwards / backwards  
  with automatic speed control  
  - Main belt conveyor start / stop and +/-  
  - Side conveyor MCL start / stop and +/-  
  - Apron feeder start / stop and +/-  
  - Automatic start / stop  
  - Machine stop button (blue)  
  - Display



## 13) WORKING LIGHTS

- Tower with 4 lamps                    p/n 701006  
  LED lights 12/24 V; 45 W  
  each lamp: 9 pcs. LED's (p/n 205147)  
  4500 Lumen
- protection degree                    IP69K
- Weight                                    9 kg    (20 lb)



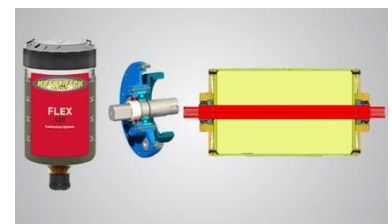
## 14) FUEL FILLING PUMP p/n 701030

- with automatic stop                   p/n 701030
- Weight                                    10 kg    (22 lb)
- Model                                      F 80-24-1"
- Capacity                                  80 l/min
- Filter                                        3 micron with water absorbent media
- Suction hose                            3/4" 1,5 m long
- Drive                                        on board-electric 24 V DC



## 15) RETURN DRUMS BEARINGS LIFE TIME LUBRICATED p/n 101556

- On conveyors                            MCL, LSL, RSL; USC
- Description                              - Bearings maintenance free for the total life time  
  - Screen bearings lubricated with lubrication  
  cartridge (Change interval with engine oil)



## 16) ANTI CLOGGING SYSTEM p/n 102382

- Application                                To be used for bottom deck if the feed material is  
  sticky and the deck is clogging
- Weight                                    30 kg    (65 lb)



## TECHNICAL SPECIFICATION - OPTIONS

### 17) SCREEN FLOW BRAKE p/n 607476

- Application To increase the screening efficiency when screening round shape material, which has bigger size than 200 mm and transferred to fast above the screen.
- Weight 136 kg (290 lb)



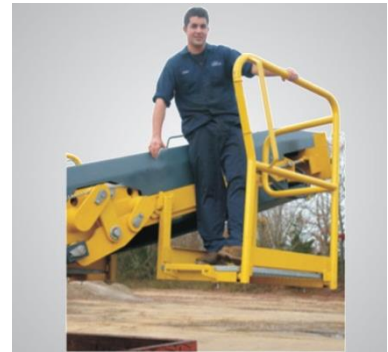
### 18) FAST TENSIONING SYSTEM FOR SCREENS p/n 701025

- Application For Upper deck
- Function No bolts have to be opened; only wedges are used for screen tensioning
- Weight 14 kg (30 lb)



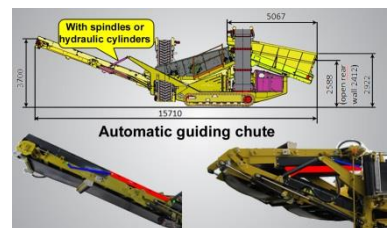
### 19) PICKING STATION and CHEVRON BELT ON MCL

- Picking station application To take out pieces of wood and plastic from the demolition material
- Available parts
  - p/n 610429: left and right side; 260 kg (570 lb)
  - p/n 610427: right side; 130 kg (285 lb)
  - p/n 610428: left side; 130 kg (285 lb)
  - p/n 615671: preparation for picking station
- Adjustment speed MCL Either on RELYTEC panel or optional radio remote control
- Chevron belt On standard MCL: p/n 602570  
On SXL MCL: p/n 201632



### 20) MAIN CONVEYOR 21 MCL SXL-H p/n 693810

- Length 6.800 mm (+ 1.800 mm)
- MCL angle setting With spindles: p/n 693810; (+ 2.100 lb)  
With hydraulic cylinder: p/n 693810+693803
- Operation without RSC MCL can be slide hydraulically under the screen for stockpiling of middle and coarse fraction
- Guiding chute Automatically folding; no disassembly necessary for transport
- Execution Feeding zone with trampoline for damping of the falling material (extended lifetime of rubber belt); sliding bars
- Transport Length: + 1.850 mm; Height 3.360 mm (+6'1"; H10'9")
- Weight + 1.000 kg (+ 2.200 lb)



## TECHNICAL SPECIFICATION - OPTIONS

### 21) Options LSL and USC

#### TUNGSTEN SCRAPERS

- Application	For wet and sticky material
- Available parts	p/n 102288: Tungsten scraper LSL + USC p/n 101560: Tungsten scraper LSL p/n 101808: Tungsten scraper USC p/n 200360: CHEVRON belt LSL



### 22) Options to STANDARD HOPPER

#### HOPPER EXTENSIONS

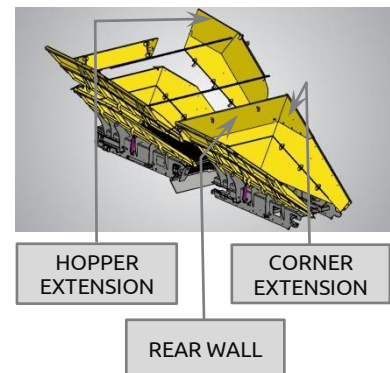
- Left side	On two sides: H=600 mm; with 2 chains p/n: 615925; approx. + 313 kg	(+ 690 lb)
- Right side	p/n: 615930; approx. + 313 kg	(+ 690 lb)

#### CORNER EXTENSIONS

Remark: with corner extensions and rear wall, hopper volume is increased to 8 m <sup>3</sup>	On the right side: p/n 615955; + 95 kg On the left side: p/n 694255; + 95 kg Rear wall: p/n 615950; + 240 kg	(+ 200 lb) (+ 200 lb) (+ 500 lb)
--	--	--

#### WEAR LINING HOPPER

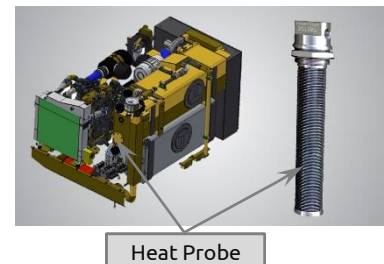
Wear lining HB 450; s=8 mm at the bottom p/n 603990; + 280 kg	(+ 600 lb)
Wear lining HB 450; s=8 mm at the top and bottom; p/n 616650; + 600 kg	(+ 1.320 lb)



### 23) HEAT PROBE FOR HYDRAULIC OIL p/n 103614

(this option is only available together with the heating system p/n 203460)

- Type	HP 2024-ORB; Turbulated Immersion Heat Exchanger
- Description	Multiple immersion tank heaters utilize hot coolant to keep bulk fluids warm
- Order information	This heating system is available for the dieseltank and the hydraulic oil tank (order each extra!)
- Insert length	610 mm (24")
- Output at -30° C	3 kW (4 hp)



### 24) Option for ENGINE UNIT p/n 203460

#### HEATING SYSTEM FOR ENGINE

- Heating power	up to 9,1 kW;	(12 hp)
- Fuel consumption	0,19 - 1,1 l/h	
- Voltage / Watt	24V; 37-90 W	
- Operating temperature	-40°C - + 80°C	
- Weight	4,8 kg	(11 lb)
- Additional	Incl. timer for 3 starting times and temperature pre-selection	





## TECHNICAL SPECIFICATION - OPTIONS

### 25) UMTS MODEM WITH GPS TRACKING SYSTEM "KEESTRACKER" (without SIM card) p/n 102971

- Functions
  - WEB portal: position of the machine can be displayed on Google Maps; a geo-fence can be generated.

**FOR DEALER ONLY:**

- Real time access to Diesel engine, parameters of components and alarms.



### TRANSFER MACHINE DATA THROUGH KEESTRACKER

The Buyer will not transfer personal data to KEESTRACK. As part of the service, KEESTRACK will receive the following data regarding the machine through "Keestracker", the tracking and controlling system of the machine in question:

- Location data of the machine
- Machine usage data (such as: performance of the engine and other functions)

The Buyer acknowledges that this information does not constitute confidential business information of the Buyer. The Buyer provides its explicit consent for this data collection and takes appropriate technical and organizational measures to ensure that natural persons cannot be identified by these mechanical data.

The Buyer explicitly acknowledges that this information is provided free of charge to KEESTRACK for the delivery of services offered by KEESTRACK and to adapt or improve its services and/or products.

## TECHNICAL SPECIFICATION – SCREEN CHOICE

### 01) TOP DECK

#### PUNCHED PLATES

(Feed size up to 600 mm)

**Keestrack punched plates are highly abrasion resistant**

p/n	Description
611196	TD CUTTED 30 mm HB 450
611198	TD CUTTED 35 mm HB 450
611201	TD CUTTED 40 mm HB 450
611203	TD CUTTED 45 mm HB 450
611205	TD CUTTED 50 mm HB 450
611209	TD CUTTED 55 mm HB 450
611211	TD CUTTED 60 mm HB 450
611213	TD CUTTED 65 mm HB 450
611215	TD CUTTED 70 mm HB 450
611217	TD CUTTED 75 mm HB 450
611219	TD CUTTED 80 mm HB 450
611222	TD CUTTED 90 mm HB 450
611174	TD CUTTED 100 mm HB 450
611180	TD CUTTED 125 mm HB 450
611186	TD CUTTED 140 mm HB 450
611188	TD CUTTED 150 mm HB 450
611190	TD CUTTED 180 mm HB 450



#### WELDED WIRE MESH

p/n	Description (set 3)
202431	TD WELDED 32 x 32 x 10 mm
202224	TD WELDED 40 x 40 x 10 mm
202024	TD WELDED 45 x 45 x 10 mm
202025	TD WELDED 50 x 50 x 10 mm
202235	TD WELDED 55 x 55 x 12 mm
202290	TD WELDED 75 x 75 x 12 mm
202294	TD WELDED 100 x 100 x 12 mm



#### WOVEN WIRE MESH

p/n	Description
202167	TD MESH 10 x 10 x 2,5 mm
202202	TD MESH 16 x 16 x 3 mm
202201	TD MESH 18 x 18 x 4 mm
202169	TD MESH 20 x 20 x 4 mm
202423	TD MESH 25 x 25 x 5 mm
202712	TD MESH 30 x 30 x 5 mm
202170	TD MESH 35 x 35 x 7 mm
202173	TD MESH 40 x 40 x 5 mm
202242	TD MESH 45 x 45 x 8 mm
202174	TD MESH 50 x 50 x 8 mm
202243	TD MESH 55 x 55 x 8 mm
202171	TD MESH 60 x 60 x 9 mm
202206	TD MESH 65 x 65 x 9 mm
202244	TD MESH 70 x 70 x 9 mm
202999	TD MESH 75 x 75 x 9 mm
202185	TD MESH 80 x 80 x 9 mm



## TECHNICAL SPECIFICATION – SCREEN CHOICE

### 01) TOP DECK

#### FINGER SCREENS

Finger dimensions  $\varnothing 36 / \varnothing 17 \text{ mm} - 800 \text{ mm}$

#### REMARK:

Finger openings average [mm]; forged fingers; deviations are possible; measuring of opening is in the beginning of the second third of the length of the finger.

p/n	mm	Inch
621806	45	1 3/4"
621812	60	2 1/4"

#### GRIZZLY STEP DECK

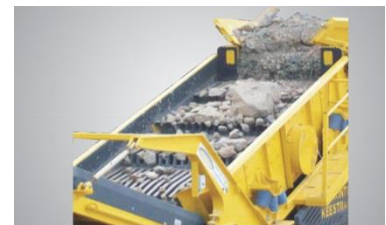
p/n	mm	Inch	Weight [kg]
615820	60	2 3/8"	1631
611600	70	2 3/4"	1580
620435	95-120-135		1500

#### RUBBER DECK

Advantages:

- Long lifetime, 5 time longer than steel
- Low noise
- Self-cleaning in waste material

p/n	Opening mm/Inch	Thickness mm/Inch
105495	20 - 3/4"	20 / 3/4"
105537	55 - 2 1/8"	35 / 1 3/8"
105290	65 - 2 1/2"	35 / 1 3/8"
202664	70 - 2 3/4"	35 / 1 3/8"



## TECHNICAL SPECIFICATION – SCREEN CHOICE

### 02) BOTTOM DECK

#### FINGER SCREENS

Finger dimensions

#### REMARK:

Finger openings average [mm]; forged fingers; deviations are possible; measuring of opening is in the beginning of the second third of the length of the finger.

#### WOVEN WIRE MESH

#### ELONGATED HARP SCREEN

Advantages:

- high percentage of open screening area
- less danger of clogging

#### SERPA DIAMOND

**Standard:** Steel finger embedded in PU

**Heavy duty (HD):**  $\varnothing 20 / \varnothing 9$  mm – 570 mm; M 16

p/n	mm	Inch	Type
613004	$\varnothing 8/s=10$	3/8	Standard
613006	$\varnothing 10/s=15$	5/8	Standard
613007	$\varnothing 12/s=20$	3/4	Standard
606624	25	1	HD
606620	30	1 1/4"	HD
606622	40	1 3/4"	HD

p/n	Description
202229	BD MESH 3 x 3 x 2 mm
202594	BD MESH 5 x 5 x 2 mm
202230	BD MESH 6 x 6 x 2 mm
202105	BD MESH 8 x 8 x 2,5 mm
202106	BD MESH 10 x 10 x 2,5 mm
202107	BD MESH 12 x 12 x 3 mm
202108	BD MESH 15 x 15 x 3 mm
202153	BD MESH 18 x 18 x 4 mm
202109	BD MESH 20 x 20 x 4 mm
202225	BD MESH 22 x 22 x 4 mm
202110	BD MESH 25 x 25 x 5 mm
202560	BD MESH 28 x 28 x 6 mm
202111	BD MESH 30 x 30 x 5 mm
202518	BD MESH 32 x 32 x 6 mm
202155	BD MESH 35 x 35 x 7 mm
202112	BD MESH 40 x 40 x 8 mm
202379	BD MESH 45 x 45 x 8 mm
202113	BD MESH 50 x 50 x 8 mm
202255	BD MESH 55 x 55 x 8 mm
202187	BD MESH 60 x 60 x 10 mm
202397	BD MESH 65 x 65 x 9 mm
202398	BD MESH 70 x 70 x 9 mm
202399	BD MESH 75 x 75 x 9 mm
202114	BD MESH 80 x 80 x 12,5 mm
202597	BD MESH 90 x 90 x 12,5 mm

p/n	Description
202400	BD HARP 4 x 200 x 1,6 mm
202214	BD HARP 5 x 130 x 2 mm
202094	BD HARP 6 x 200 x 2 mm
202092	BD HARP 8 x 130 x 2 mm
202095	BD HARP 8 x 200 x 2 mm
202649	BD HARP 10 x 50 x 2,8 mm
202617	BD HARP 10 x 100 x 2,5 mm
202096	BD HARP 10 x 200 x 2,5 mm
202618	BD HARP 12 x 100 x 3 mm
202097	BD HARP 12 x 200 x 3 mm
202541	BD HARP 15 x 50 x 3 mm
202098	BD HARP 15 x 200 x 3 mm
202546	BD HARP 20 x 100 x 4 mm
202135	BD HARP 20 x 200 x 4 mm
202100	BD HARP 25 x 200 x 4 mm
202101	BD HARP 30 x 200 x 5 mm
202102	BD HARP 40 x 200 x 5 mm
202103	BD HARP 50 x 200 x 6 mm

202262	BD HARP-SERPA 10 x 200 x 3 mm
202263	BD HARP-SERPA 12 x 200 x 3 mm
202182	BD HARP-SERPA 15 x 200 x 3 mm
202316	BD HARP-SERPA 20 x 200 x 4 mm
202444	BD HARP-SERPA 24 x 200 x 4 mm

